



Pre-2022 Pflux 2&3 Auto-Clean Kit Installation

READ, UNDERSTAND, AND FOLLOW ALL WARNINGS AND INSTRUCTIONS BEFORE INSTALLING THIS KIT AND USING THIS EQUIPMENT. Failure to follow all instructions listed below may result in electric shock, fire, and/or serious personal injury or property damage. A qualified individual or electrician must perform the tasks below.

Before removing any parts, turn off the machine and remove the power source.

Save all parts and hardware when removed. Some parts will be reused.

This installation requires kit number ADCACKITPFLUX23V1

This kit is available on our website at

<https://www.shop.lagunatools.com/Pre-2022-Pflux-2-and-Pflux-3-AutoClean-Retrofit-Kit>



We suggest that you watch and follow our installation video for this kit.

The video is available at the page and link above, or on our YouTube channel

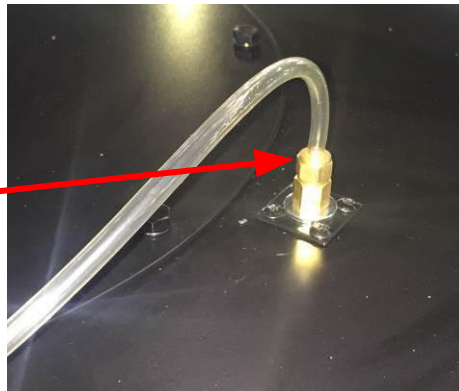
at <https://youtu.be/l72zsNajbAY>



Remove the clear tube on top of the machine by loosening brass fitting.

Loosen and remove the 4 screws holding the brass fitting on top of the machine.

Remove the clear tube and brass fitting.



Remove control panel from switch box.

Loosen and remove the 6 screws on control panel as shown below.

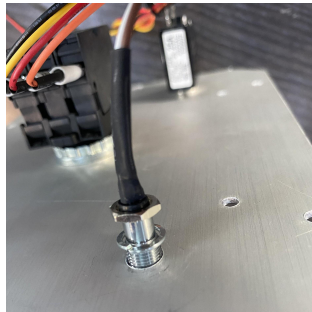
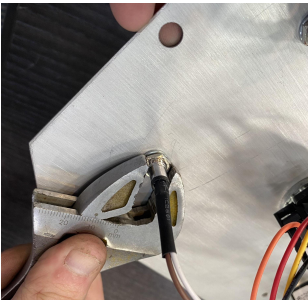
Loosen and disconnect all electrical connections connecting the control panel to the switch box.

Refer to wiring diagram on next page.



Remove HEPA and DRUM LED lights from control panel

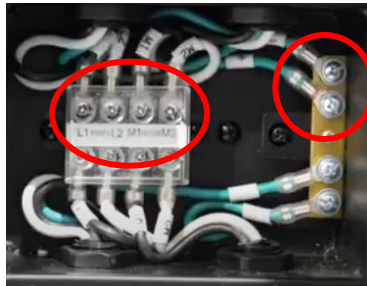
Disconnect and remove the LED Lights by using an open-end wrench on the nut on the back side of the control panel. Pull out the LED light from the front of the control panel.



Disconnect wires at junction box.

Open filter door and locate junction box on back side of upright panel. Remove 4 screws and cover plate for junction box. *Refer to the wiring diagram below.*

Disconnect L1, L2, M1, M2, and 2 ground wires at top of junction box. *Refer to the wiring diagram below.*



Remove switch box from upper side panel.

Disconnect the motor cord electrical connections leading up to the switch box from the junction box behind the upright panel. *Refer to the wiring diagram below.*

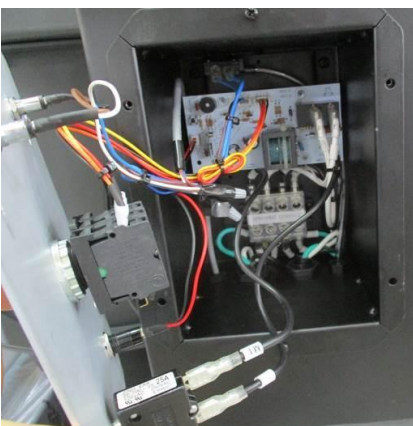
Disconnect the power cord electrical connections leading up to the switch box from the junction box behind the upright panel. *Refer to the wiring diagram below.*

Disconnect the motor cord electrical connections, T1, T2, and Ground on the contactor in the switch box.

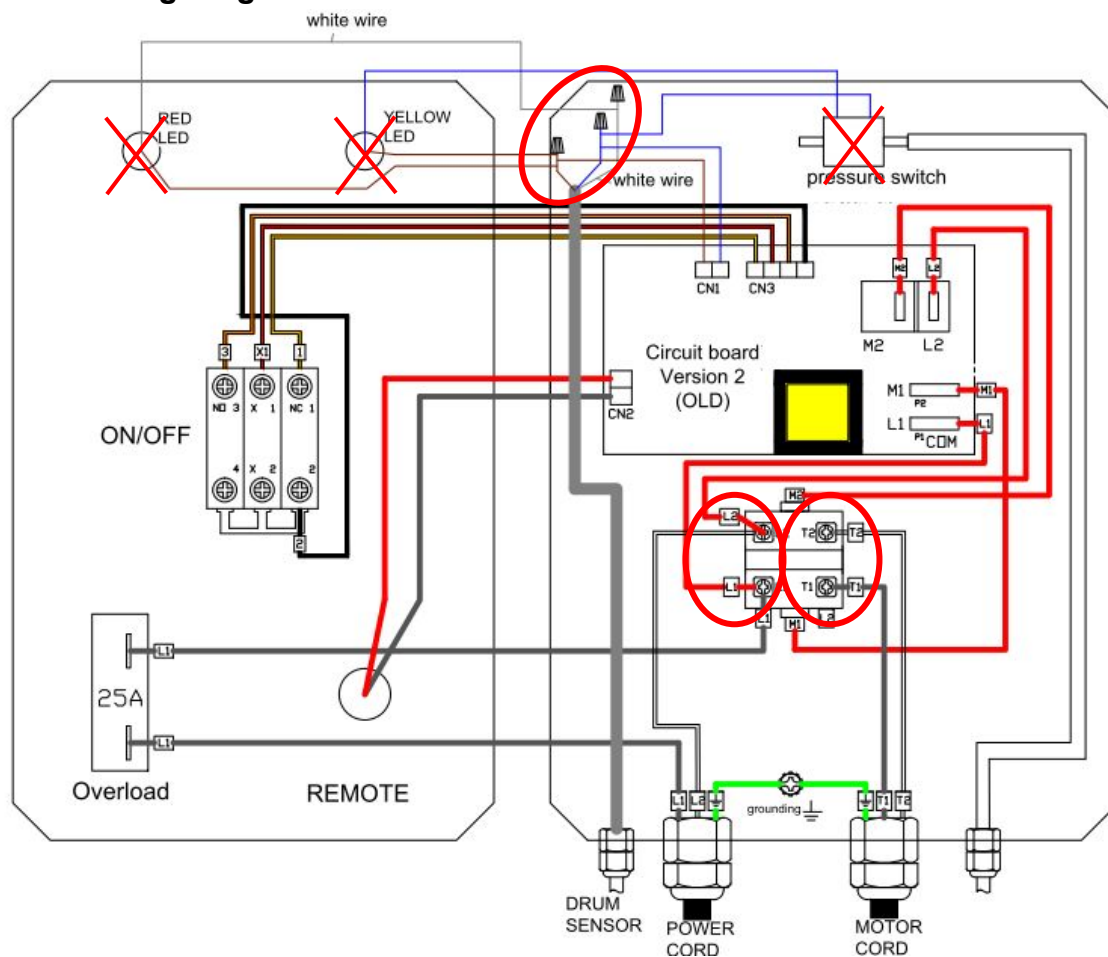
Disconnect the power cord electrical connections, L1, L2, and Ground on the contactor in the switch box. *Refer to wiring diagram below.*

Disconnect the drum sensor electrical connection and remove the cord from the switch box. Set aside for later reassembly. *Refer to the wiring diagram below.*

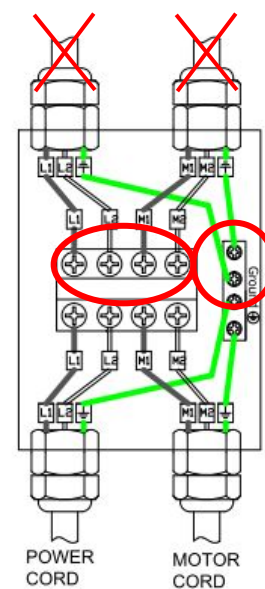
Pull the switch box out of the upper side panel through the front.



Wiring Diagram - Old Panel



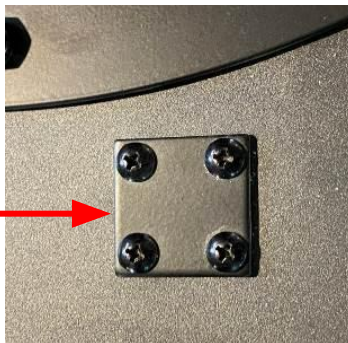
Junction Box



Install new auto cleaning parts

Cover the hole on the dust chute.

Cover the hole in the dust chute where the brass fitting was removed. Apply foam tape around the opening. Use 4 sheet metal screws 3/16" x 1/2" to attach the small square cover plate to seal this opening.



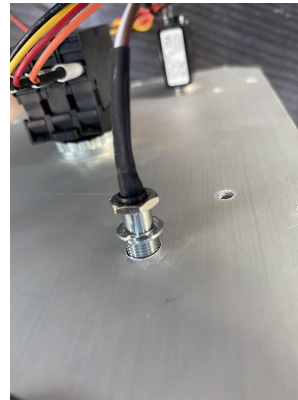
Attach new HEPA and DRUM LED lights to control panel

Take the two new LED lights and install into the control panel.

Yellow = HEPA

Red = DRUM

Remove the nut and washer from the LED light and set aside. Thread the LED light in from front to back with LED light in front. Take the nut and washer and tighten the back of the LED light to the control panel by using an open end wrench.



Assemble new switch box to the upright panel

Take the new switch box and put into the opening on the upright panel. Secure with 2 M4 x 10mm round head screws as shown below.

Feed the motor cord from bottom of control box to top of junction box toward inside of machine. Secure electrical connections, M1, M2, and ground on the terminal block in the junction box. *Refer to the wiring diagram.*

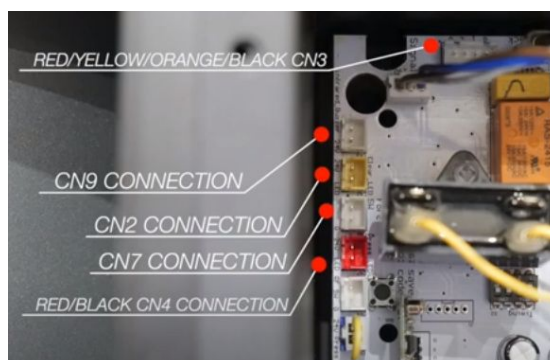
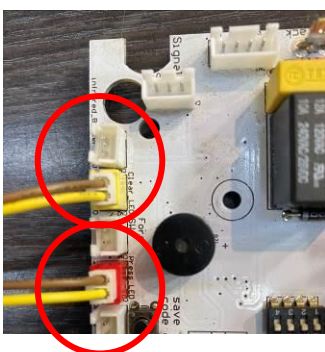
Feed the power cord from bottom of control box to top of junction box toward outside of machine. Secure electrical connections, L1, L2, and ground on the terminal block in the junction box. *Refer to the wiring diagram.*

Take the drum sensor power cord and thread into the bottom of the switch box from behind the upright panel. Follow the steps below for connecting wires on the drum sensor cord. *Refer to wiring diagram.*

Assemble control panel to switch box.

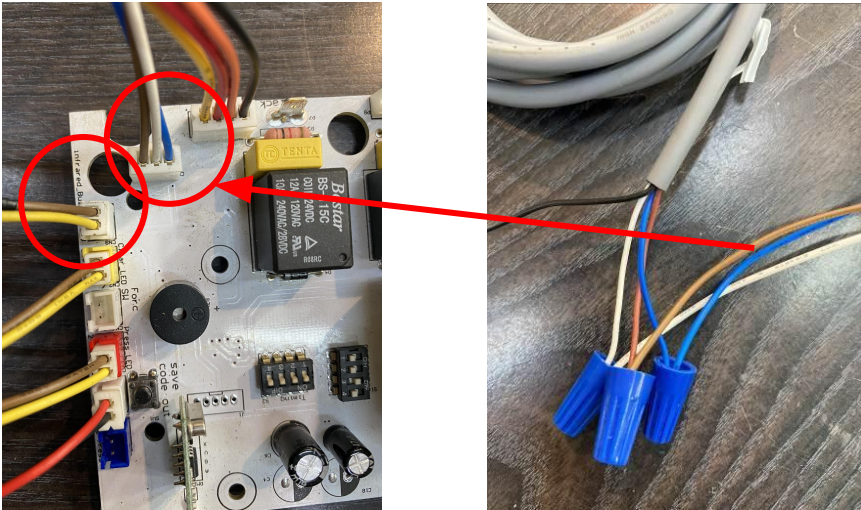
Take the control panel and connect the electrical connections to the circuit board as shown below.
Connections from rear of control panel

- HEPA Yellow LED has 2 electrical wire connections with terminal connector. See photo below. Connect one to CN2 on circuit board (yellow pin socket on circuit board). Connect the other to CN7 on the circuit board (red pin socket on circuit board).

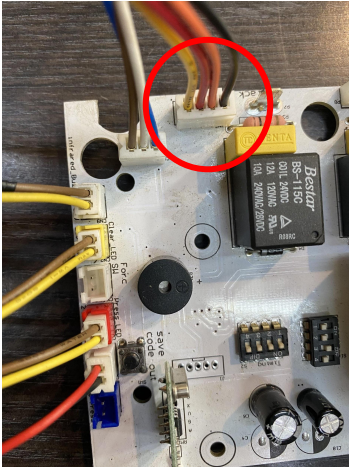


Connections from rear of control panel (continued)

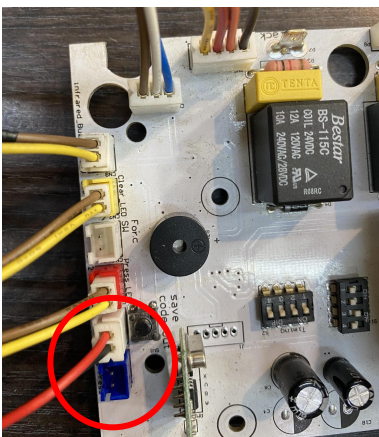
- DRUM Red LED has 1 electrical wire connection with terminal connector. Connect to CN9 on circuit board. A loose electrical wire needs to be connected to the drum sensor cord. Connect wires leading from the cord to the same color wire on this loose wire using the wire nuts provided. Blue to Blue. White to White. Brown to Brown.



- ON/OFF button has one electrical wire connection with terminal connector. Connect to CN3 on circuit board.



- Remote Button has one electrical wire connection with terminal connector. Connect to CN4 on circuit board.



- System button on rear of switch panel must be connected with the two M1 electrical connection leads from the switch box.



Auto-clean motor power cord

Take the auto clean motor power cord from the switch box and thread it up behind the upright panel, and out through the top gap between the upright panel and the upper dust chute. You will come back to this cord after you have setup the auto clean motor and cover plate.



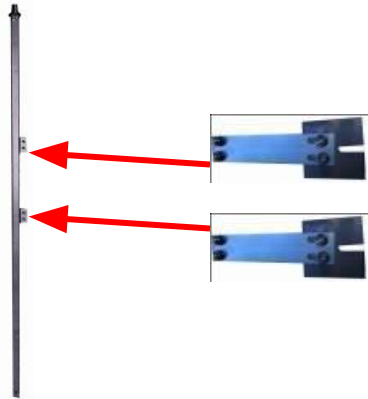
Assemble auto-clean motor plate

Remove the 12 sheet metal screws around the cover plate at top of machine above filter. Apply foam tape around perimeter of the bottom of the auto-clean motor plate. Install connector to bottom of motor shaft with 2 small set screws provided. Attach motor plate to the top of the dust chute using the 12 3/16"x 1/2" sheet metal screws. Point the auto-clean motor connection box toward side of the machine with the control panel.



Assemble the cleaning components.

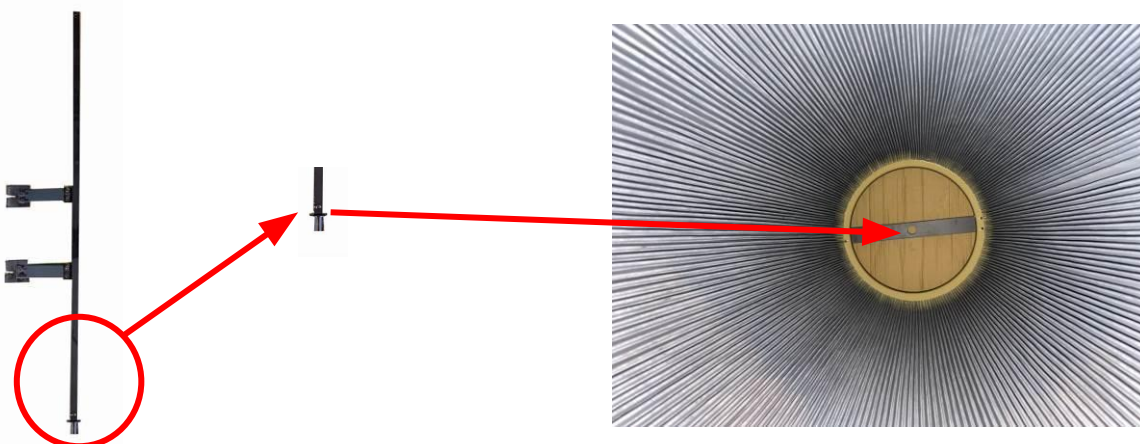
Take the 2 filter cleaning paddles and assemble to the filter rotation shaft using 4 $\frac{1}{4}$ " x $\frac{5}{8}$ " hex bolts, 8 $\frac{1}{4}$ " flat washers, and 4 $\frac{1}{4}$ " hex nuts. Install one washer under each bolt head and under each nut.



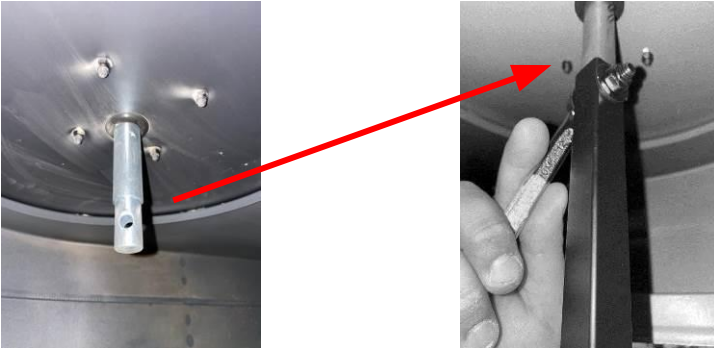
Remove HEPA filter from machine and turn upside down onto the floor. Take the rotation shaft base and install it onto the bottom of the HEPA filter using 4 $\frac{3}{16}$ " x $\frac{3}{4}$ " screws into the bottom 4 dimples in the bottom inside flange of the filter.



Turn the HEPA filter right side up and insert the filter rotation shaft assembly into the HEPA filter from the top opening. It will be easier to insert while holding it at a slanted angle. The rotation shaft has a top and bottom end. The top end has bolt holes for the next step. The bottom of the shaft will fit into the rotation shaft base at the bottom of the filter.



Move HEPA filter assembly under the dust chute, and with the help of another person holding the HEPA filter, secure the top end of the rotation shaft to the cleaning motor spindle inside the dust chute using (1) 5/16" x 1-1/2" hex bolt, (2) 5/16" x OD18 x 2t flat washers and (1) 5/16" lock nut.



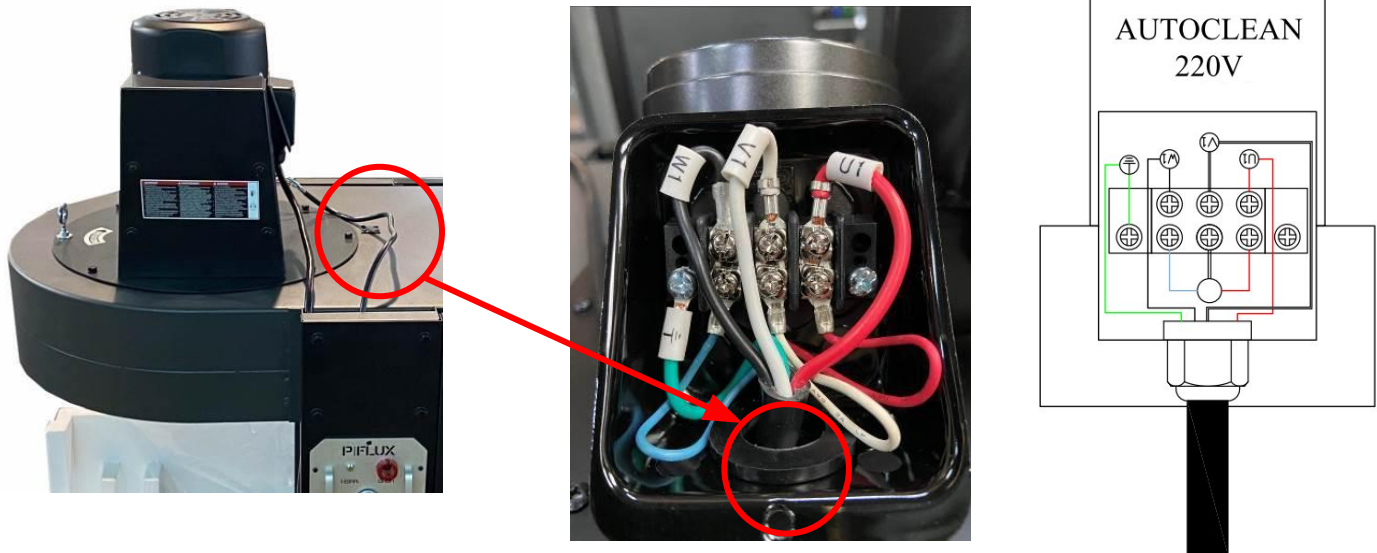
Secure and tighten the (1) 5/16"x 3/4" and (1) 5/16" x 23 x 2 flat washer on the rotation shaft base.



Open the canister filter doors and secure the HEPA canister filter onto the dust chute by fastening the band clamp on the top part of the HEPA canister filter. Make sure the band clamp is tightly fastened. It does not matter which side the clamp faces.



Open the junction box on the Autoclean motor and remove the strain relief at the bottom. Take the auto clean motor cord leading from the top upright support with the control panel and insert through the strain relief, connect the wires according to the wiring diagram below. Close and secure the junction box after you have completed the wiring.



Clear tools, packaging, and other materials away from dust collector. Plug machine into outlet. Push the ON button to start machine. Turn the machine OFF. You should now hear the sound of the filter cleaning paddles during the cleaning mode.

Test remote control operation. If needed, sync your remote to the new control box.

1. Press the remote sync button on the control box and wait for 2 beeps (don't let go after the 2 beeps)
2. While holding the box's sync button, press the remote sync button and wait for 3 beeps.
3. Your remote should now be paired to your dust collector.