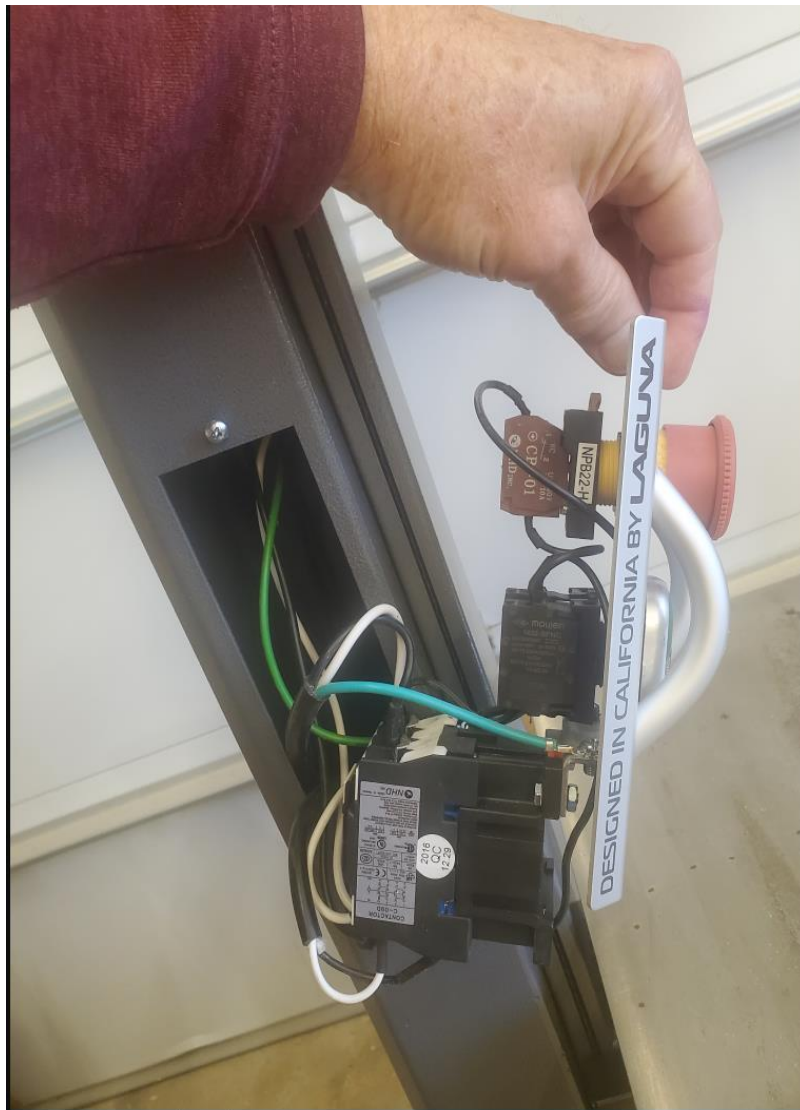




## **Laguna 14|BX and 18|BX Bandsaws**

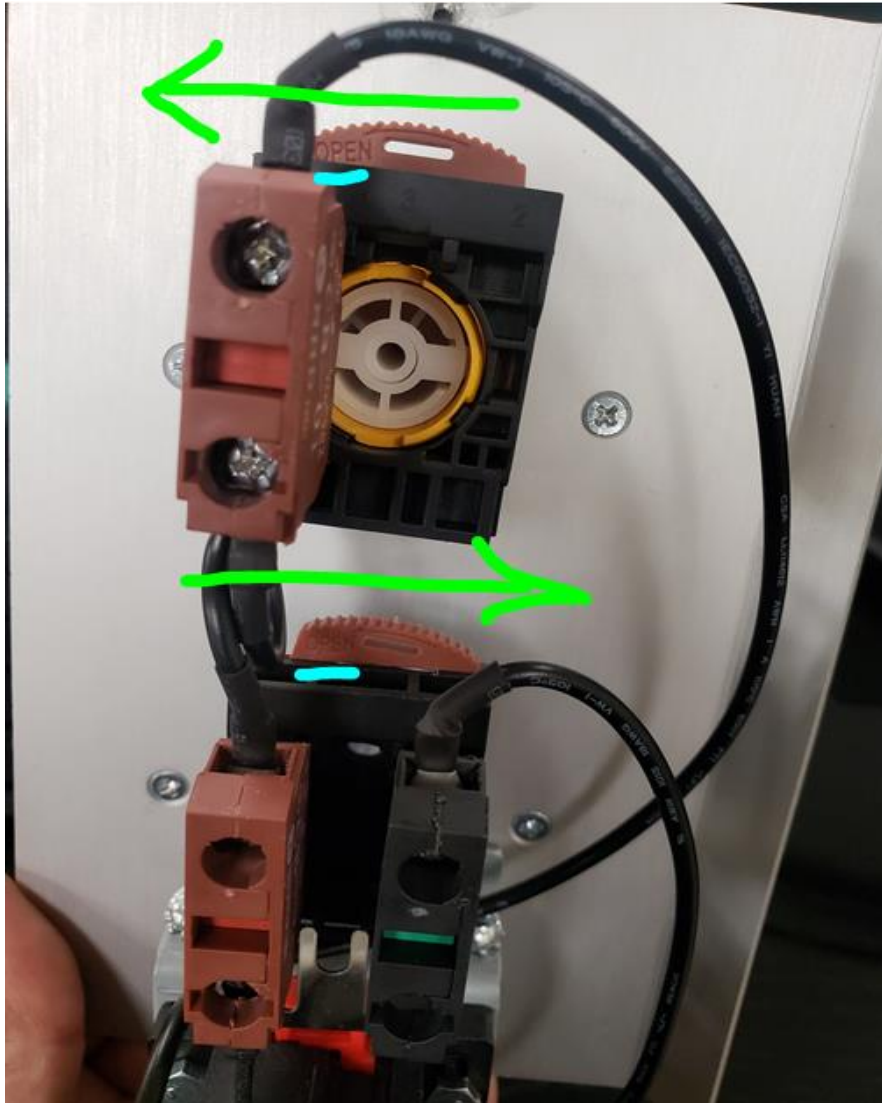
### **User's Guide for Replacing the On/Off & E-stop Switches**

- 1) After removing the 2 screws from the switch face plate, you will be able to pull the plate forward and let it hang so you can access switches



2) Looking at the back of the plate (facing the switch wiring components) you will see a rounded, brown tab at the top of the component. This will unseat the component from the switch

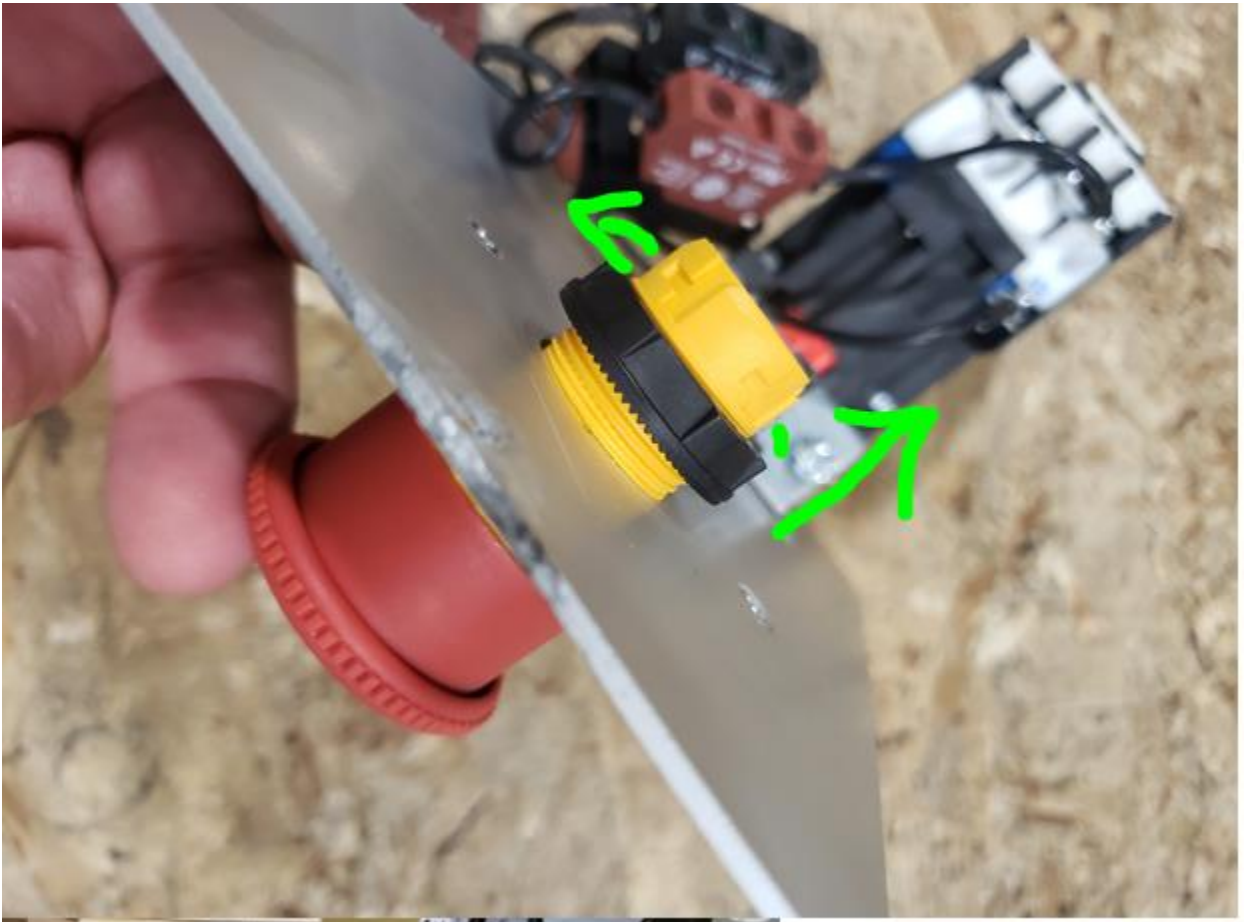
- The tab can be fingered either (*left or right*) to unlock/lock the wiring component *(the tab is labeled with an arrow to 'open')*



- 3) Once the brown tab is unlocked, the wiring component can be lifted off the threaded stem
- \*The wiring connections can be unscrewed before or after unsheathing the stem



- 4) Unscrew the plastic nut that seats the switch to the faceplate (*pliers can be used if cannot be loosened by hand*)





- 5) Once fully loosened, the switches can be removed from the faceplate and replaced
- If the **contactor** is needing to be replaced, the on/off switch must be removed to access the 2 screws holding it to the faceplate



6) CRITICAL STEP: The 'silver' jumper plate must be removed from the old on/off switch and added to the new switch in order for the saw to power up

- Remove jumper plate from old switch by loosening two Phillips head screws and pulling the plate
- Add to new switch by loosening, inserting plate and tightening the 2 screws

