

## **1216 Lathe Drive Belt & Spindle Removal**

**(These instructions are for Laguna 1216 Lathe)**

**Follow the steps provided in this instruction manual to perform a spindle removal and/or drive belt on your Laguna 1216 successfully.**



\*Shown with optional accessories

**You will need the following.**

**1**



**2**



**3**



- 1. Set of Allen/Hex Wrenches**
- 2. Rubber Mallet**
- 3. Pliers**

**By the end of these instructions, you will know how to.**

- Remove/Install the drive belt.**
- Remove/Install the spindle.**

**It's recommended to have a cup/bowl to hold the screws as they are very small. Sweeping the floor around the workspace will increase the chance of recovering a screw if one is dropped.**

### STEP 1

**Remove power from the machine by unplugging the unit and waiting at least 1 minute.**



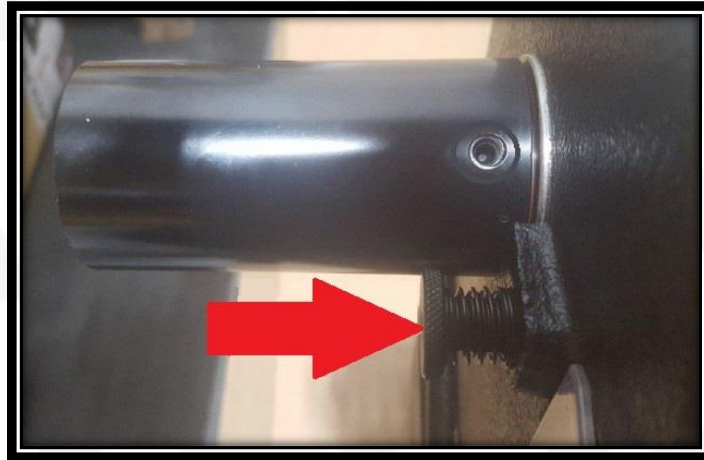
### STEP 2

**Loosen the 2 set screws on opposite sides of the handwheel.**



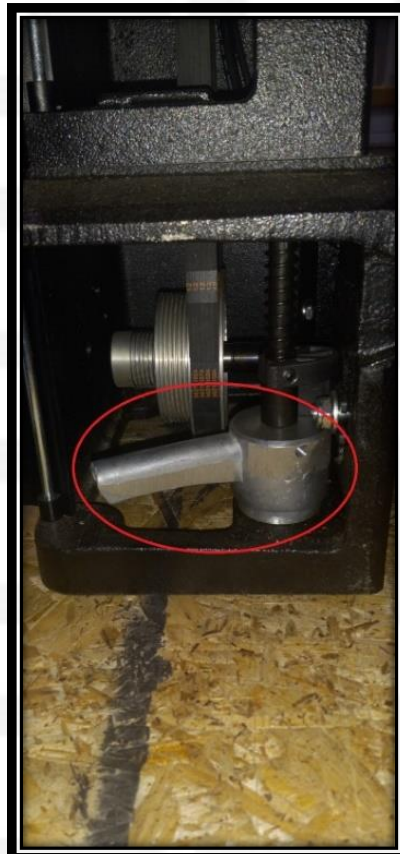
**STEP 3**

**Remove the indexing pin.**



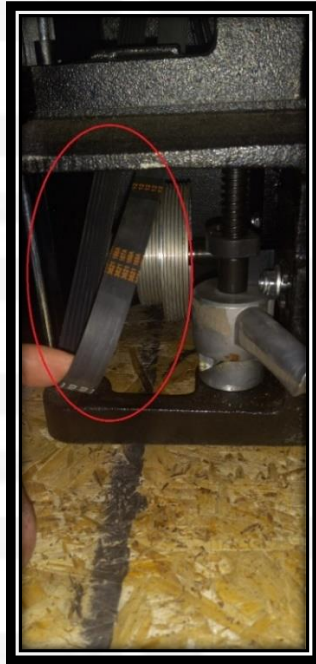
**STEP 4**

**Move the belt tension handle to release tension.**



## **STEP 5**

**Remove the belt from the motor pulley.**



## **STEP 6**

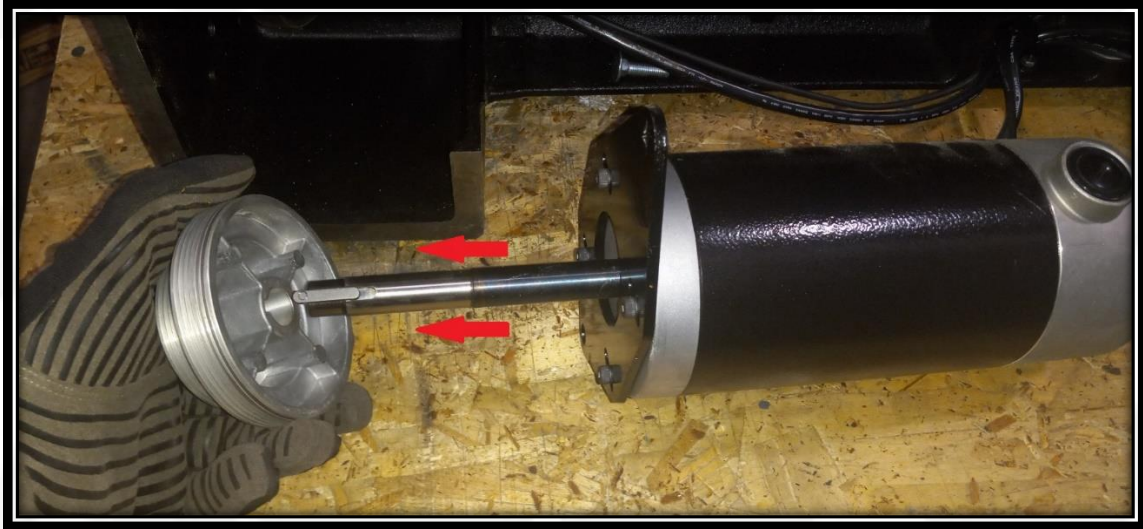
**Using a 3mm hex wrench remove the set screws located in the pulley.**





## STEP 7

Remove the motor pulley away from the motor shaft.



## STEP 8

Remove the spindle by GENTLY tapping on the outboard side of the spindle with a rubber mallet.



## STEP 9

Once the spindle is out as far as is shown in the picture below, you should be able to shift all the components inside so you can remove the belt from the spindle. Depicted below is the distance the spindle is extended and the belt itself. Notice the hole in the spindle for the spindle lock is barely exposed.

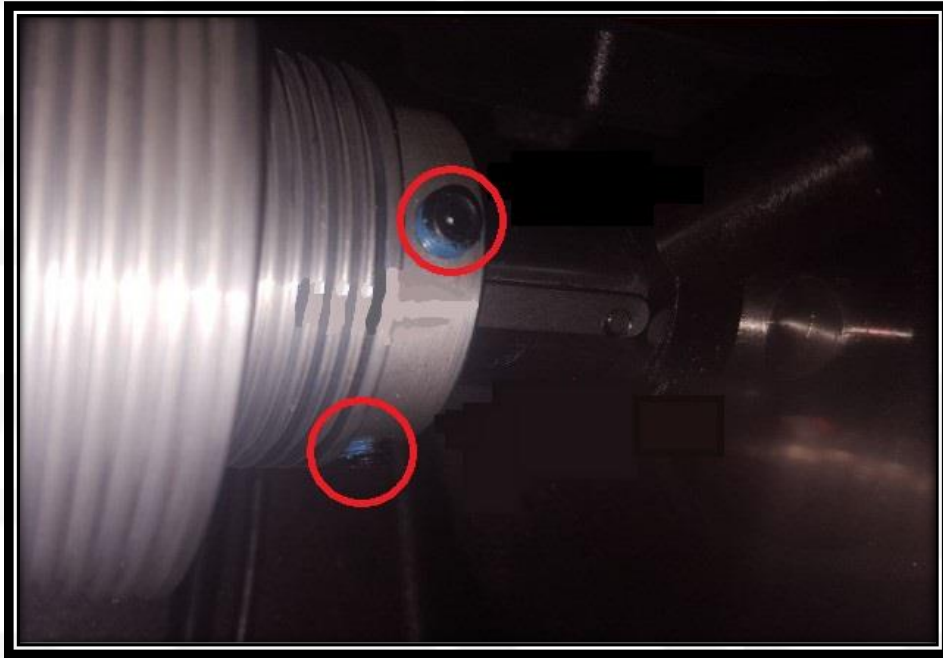


**Note: If the inboard bearing comes out with the spindle, this is fine. Just proceed with the steps as normal. This will make some of the following steps considerably easier. You will just need to dislodge the bearing to insert it into the headstock before inserting the new spindle.**

**If you're reading this document to change out the drive belt, simply insert your new drive belt here and reverse the steps above to reassemble.**

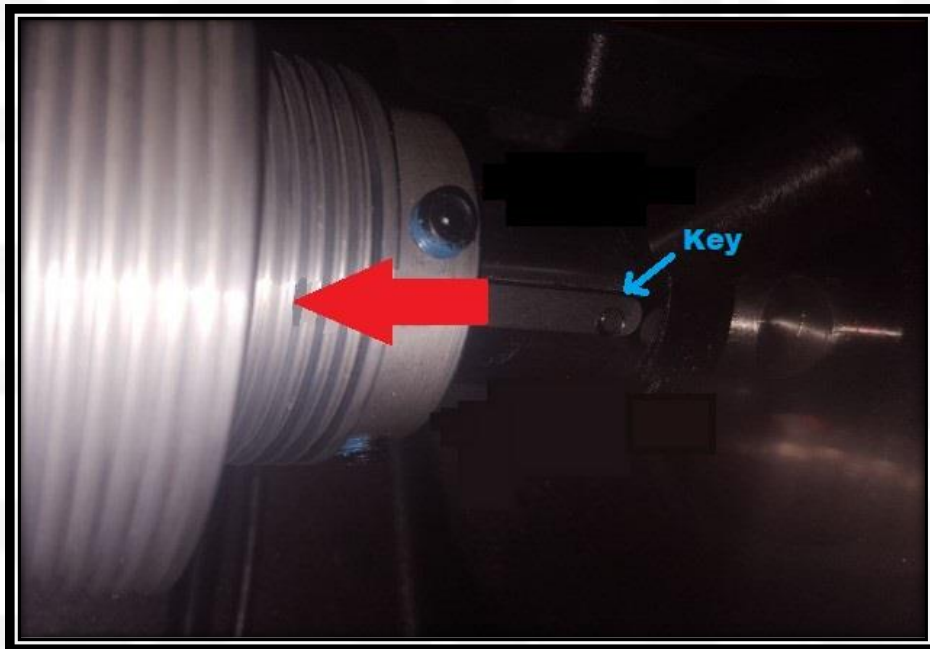
## STEP 10

**Loosen the set screws in the spindle pulley.**



## STEP 11

**Slide the spindle pulley to the left to expose the key.**

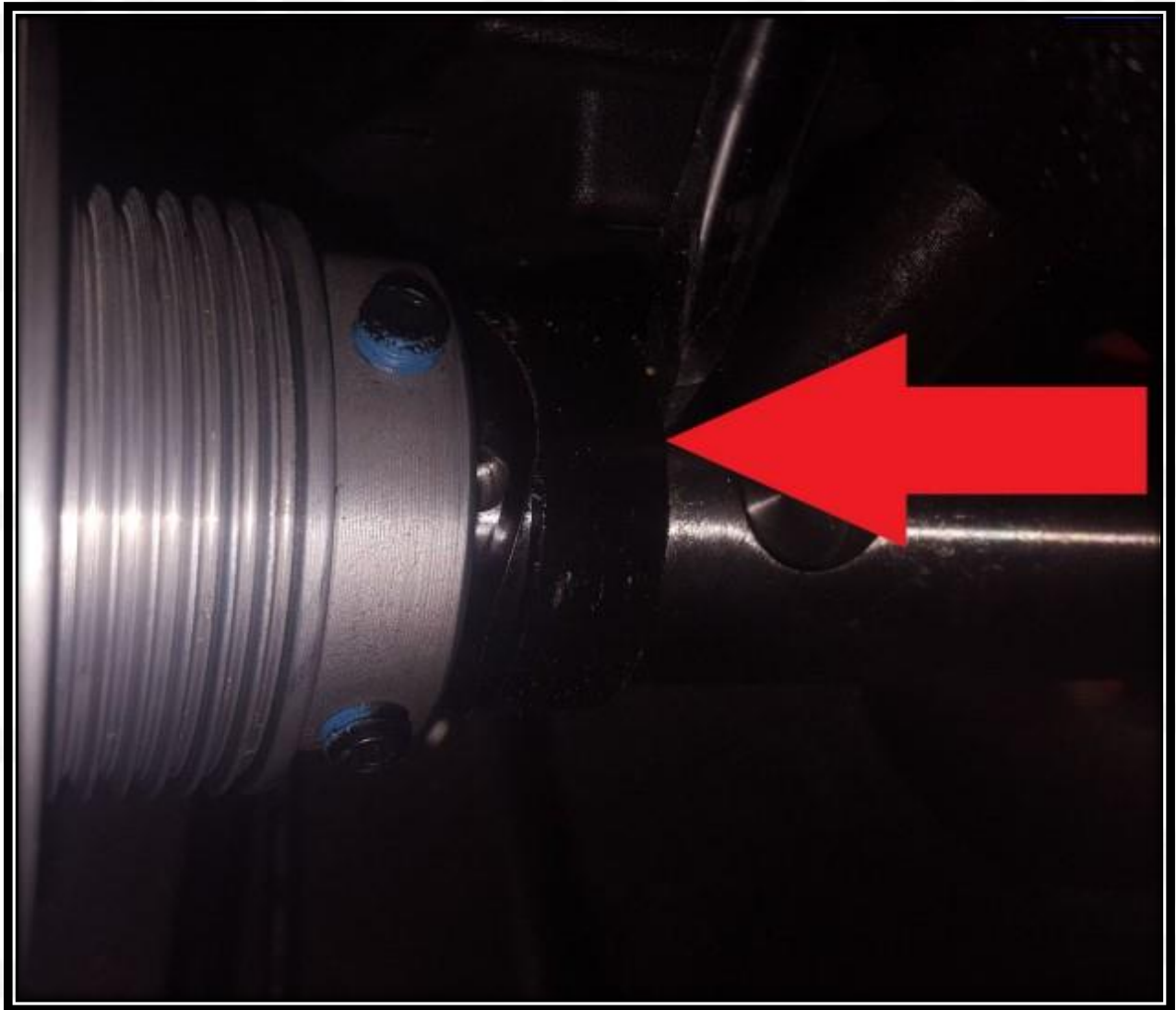




**This is by far the most delicate part of this process so make sure to take your time!**

## **STEP 12**

**Slide the wave washer to the left and use a flat head screwdriver to slide the magnetic ring to the left side along with the spindle pulley. To do this properly, you will need to gently push it over, rotate the spindle, push it again, and continue this process until it comes loose.**



**Once this is free to move, you can slide it and the pulley off the left side of the spindle while pulling the spindle out of the inboards (Right) side of the headstock and everything is disassembled!**

**CAUTION: The magnetic ring CAN NOT move right because of the spindle design! It must slide left!**

**It's easier to mount the magnetic ring after polishing down the surface between the keyway and the spindle lock cut-out (RED)**

### **STEP 13**

**Insert it into the headstock. While the outboard (Left) side of the spindle is inside the headstock, you will need to put the following items back on in this order before going completely through the headstock:**

- 1. Magnetic Ring**
- 2. Wave Washer**
- 3. Spindle Pulley Key**
- 4. Drive Belt**
- 5. Spindle Pulley**

**With all of this on, you can slide the spindle through the outboard side of the headstock.**



**To install a spindle, reverse steps 12-2**